

LIGHT

★ **Technical contact**

Antoine Marchon, antoinemarchon@gmail.com, +41 / (0)79 596 71 85

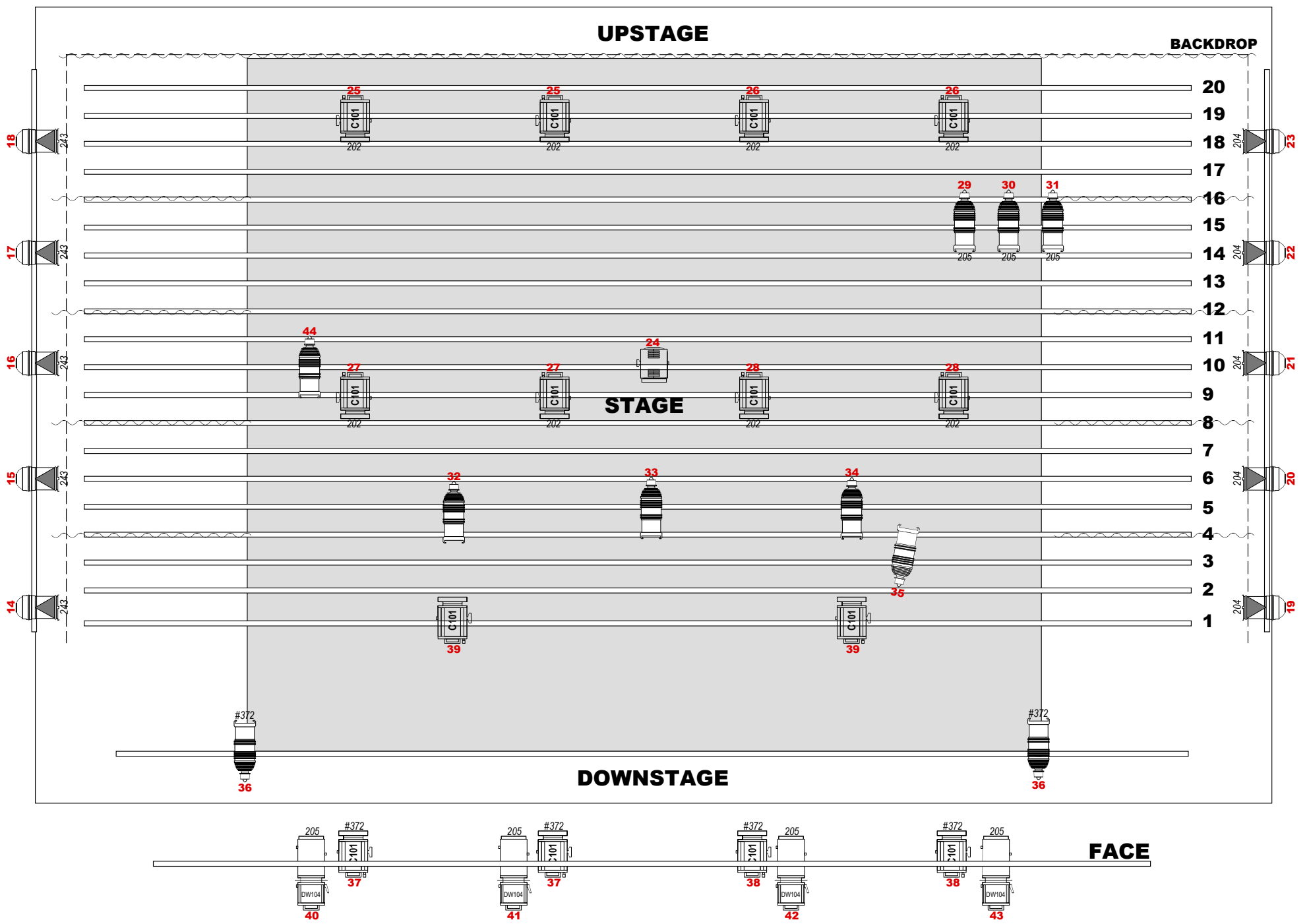
★ **Equipement to provide**

- ➔ 48x channels 10Amps
- ➔ 1x desk control 48 channels with subs / cue / sequence
- ➔ 25x PC spot 1000W
- ➔ 10x PAR64 MFL
- ➔ 10x profile 25°-50°
- ➔ 4x profile 15°-30°
- ➔ 4x Quartz asymmetric 1000w
- ➔ 1x BT 24V / 250W
- ➔ 2x pars64 CP60
- ➔ house light - audience light
- ➔ backstage blue light

★ **Filters to provide**

- ➔ LEE FILTER: 111, 202, 204, 205, 243
- ➔ ROSCO FILTER: #372

**CIE A POINT - TRANSIT
LIGHTING PLOT - TOP**



**CIE A POINT - TRANSIT
LIGHTING PLOT - BOT**

